



CAUTION! Keep the magnetic wand at least 2 inches from pacemakers and other active-implant medical devices.

Device Description: The CapsoCollect Capsule Collection Kit is a single-use accessory provided to aid in the collection of the excreted CapsoCam capsule.

Indication for Use: The CapsoCollect Capsule Collection Kit is intended for the collection, storage, and transportation of the excreted CapsoCam capsule.

Contraindications: The CapsoCollect Capsule Collection Kit has no known contraindications.

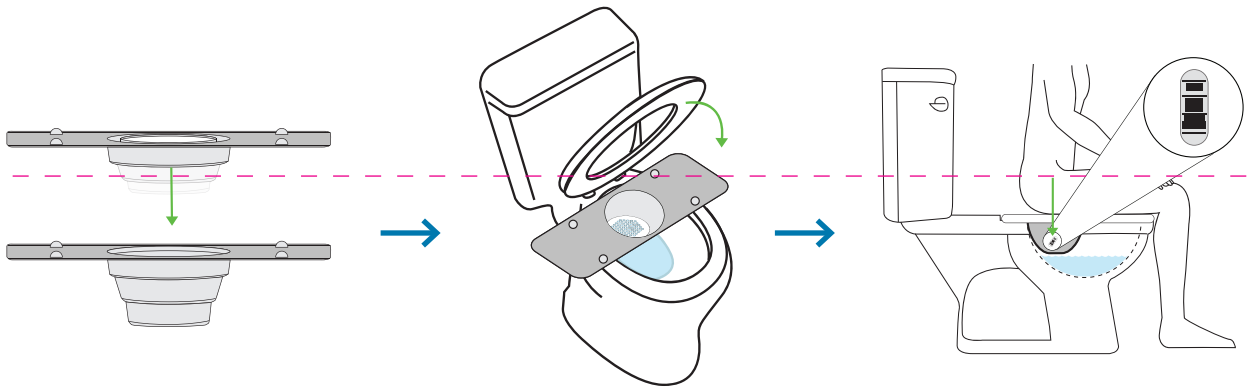
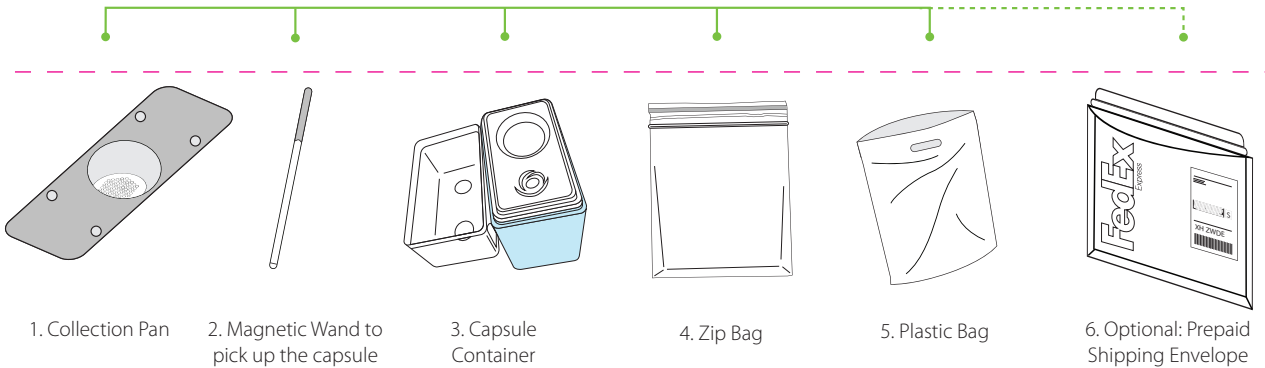
Storage: Store the CapsoCollect Capsule Collection Kit under normal environmental conditions.

Warranty: CapsoVision warrants that the collection kit is free from defects in both materials and workmanship. CapsoVision shall not be liable for incidental or consequential damages of any kind. The above warranties are in lieu of all other warranties either expressed or implied including any warranty of any merchantability or fitness for use.

Table of Symbols

| Symbol | Meaning | Symbol | Meaning |
|--------|--|--------|---|
| | Manufacturer's catalogue number | | Do not reuse this product |
| | Prescription use only. For sale by or on the order of a physician | | Contact/European representative of manufacturer |
| | Product meets European standards for safety and quality | | Use by date (with accompanying date) |
| | Instructions are included and must be read | | Manufacturer |
| | Item Lot Number (with accompanying number) | | Quantity |
| | Caution! Keep the magnetic wand at least 2 inches from pacemakers and other active-implant medical devices | | |

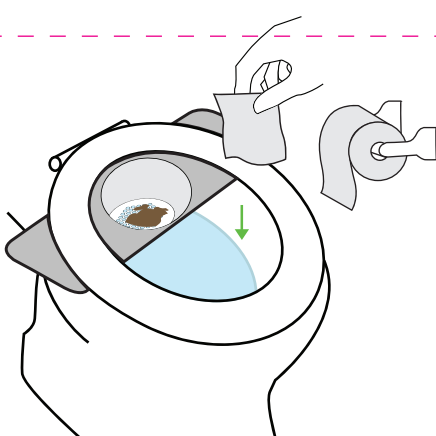
For patients who need help with the collection process, please ask your caregiver for assistance.



Push down on the circular center of the Collection Pan (1) so that it expands fully.

Place the pan on the back half of the toilet rim and lower the toilet seat. The pan may be temporarily removed for non-patients.

Defecate into the pan until the capsule is excreted.



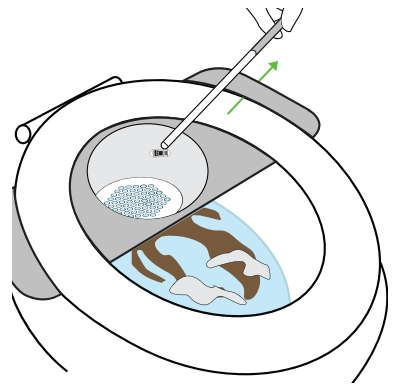
Throw toilet paper directly into the toilet bowl.



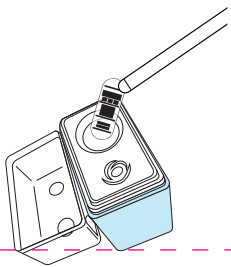
Pour water into the pan to uncover and rinse the capsule.



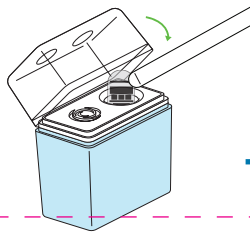
Do not yet flush the toilet if you suspect the capsule may have accidentally been excreted outside the pan into the toilet bowl. If you suspect the capsule may be in the toilet bowl but you cannot see it, probe the drain of the bowl with the wand.



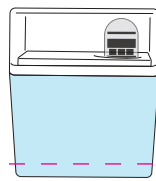
Grasp the wand (2) by the blue handle and pick up the capsule with the magnetic tip.



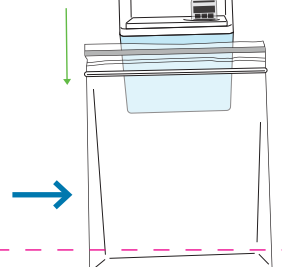
With the capsule attached to the tip of the wand, place it into the capsule container (3).



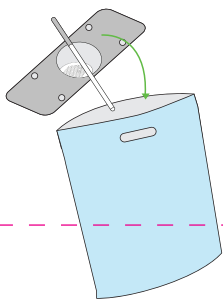
Close the capsule container lid over the wand and pull the wand away, stripping off the capsule.



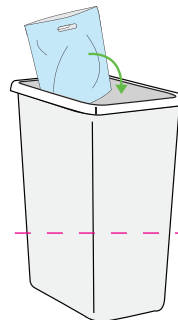
Close the lid.



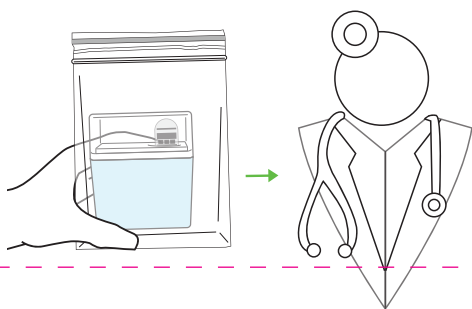
Place the capsule container in the zip bag (4) and seal it.



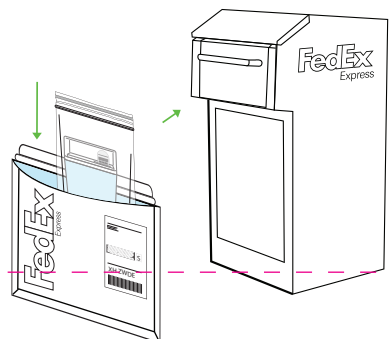
Place pan and wand into the plastic bag (5).



Dispose of the kit in the trash or recycling bin in accordance with local laws.



Follow your physician's instructions for returning the capsule container to the clinic or office.



The healthcare provider may provide a prepaid FedEx envelope (6) for the capsule container to be shipped directly to a download center. Place the zip bag with the capsule container inside in the envelope, seal and place in a FedEx drop box or take to a FedEx store.